



**The Great Lakes - St. Lawrence Seaway System**  
***Le réseau Grands Lacs - Voie maritime du Saint-Laurent***

---

2016 – Notice to Shipping #19  
MAISONNEUVE REGION  
MONTRÉAL / LAKE ONTARIO SECTION

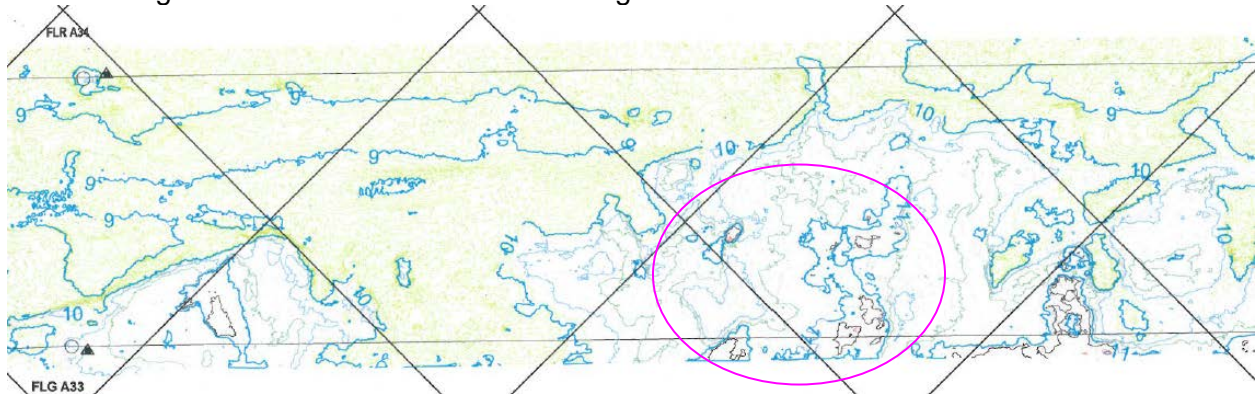
**LOW WATER LEVELS ON LAKE ST. LOUIS**

Mariners are advised that due to low water levels on Lake St. Louis, the speed limit between buoys A30 to A40 is **reduced to 10 knots for all vessels, upbound and downbound**. Vessel speeds will be monitored closely.

In addition, we are asking mariners to avoid sailing over and SOUTH of the following positions:

Two positions at 450 and 560 meters EAST of buoy A33 and at 80 meters NORTH of the SOUTH canal line.

- 45 degrees 22.34 minutes NORTH 73 degrees 49.38 minutes WEST
- 45 degrees 22.31 minutes NORTH 73 degrees 49.43 minutes WEST



Also avoid sailing over and NORTH of the following positions:

At 300 meters EAST of buoy A35 and 50 meters SOUTH of the NORTH canal line

- 45 degrees 21.96 minutes NORTH 73 degrees 49.97 minutes WEST

---

**The St. Lawrence Seaway Management Corporation**  
**Corporation de Gestion de la Voie Maritime du Saint-Laurent**

**Région Maisonneuve**  
151, rue de l'Écluse  
St-Lambert, Québec  
J4R 2V6

Tél : (450) 672-4115 Fax : (450) 672-8493

**Niagara Region**  
508 Glendale Avenue  
P.O. Box 370  
St-Catharines, Ontario  
L2R 6V8

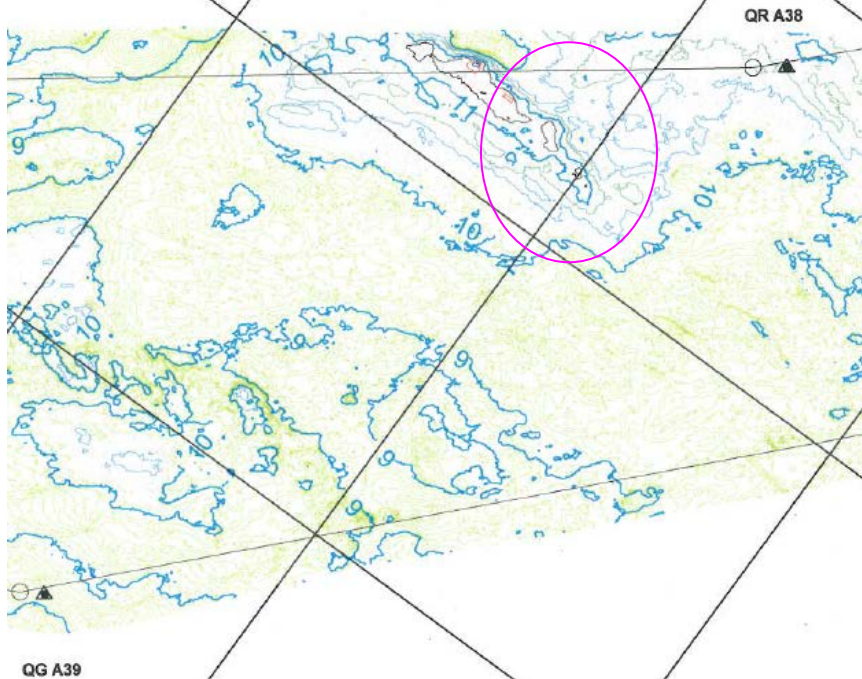
Tél : (905) 641-1932 Fax : (905) 641-5721



## The Great Lakes - St. Lawrence Seaway System *Le réseau Grands Lacs - Voie maritime du Saint-Laurent*



At 130 meters WEST of buoy A38 and 40 meters SOUTH of the NORTH canal line.  
• 45 degrees 21.56 minutes NORTH 73 degrees 50.55 minutes WEST



We will monitor the water levels closely and advise you of any changes as conditions improve.

Maisonneuve Region  
October 3, 2016

---

The St. Lawrence Seaway Management Corporation  
Corporation de Gestion de la Voie Maritime du Saint-Laurent

Région Maisonneuve  
151, rue de l'Écluse  
St-Lambert, Québec  
J4R 2V6

Tél : (450) 672-4115 Fax : (450) 672-8493

Niagara Region  
508 Glendale Avenue  
P.O. Box 370  
St-Catharines, Ontario  
L2R 6V8

Tél : (905) 641-1932 Fax : (905) 641-5721