



The Great Lakes - St. Lawrence Seaway System

Le réseau Grands Lacs - Voie maritime du Saint-Laurent

2018 – Notice to Shipping N° 15
 MAISONNEUVE REGION
 MONTREAL / LAKE ONTARIO SECTION

Revised Speed Limits on Lake St. Francis

Mariners are advised that based on feedback received, the location of speed change on Lake St. Francis outlined in the Table of Speeds will be at D1 rather than D3 for upbound vessels in open water conditions only.

The speed limits are therefore as follows:

Downbound vessels (no change)

- D49 to D3 on Lake St. Francis: 13.5 knots
- D3 to upper Beauharnois lock: 10.5 knots

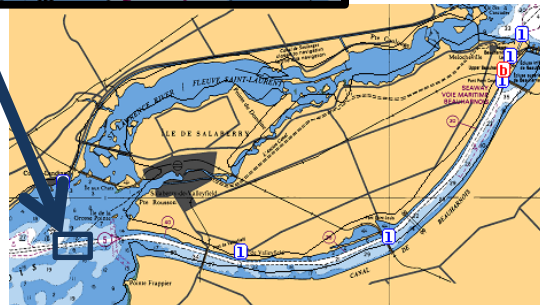
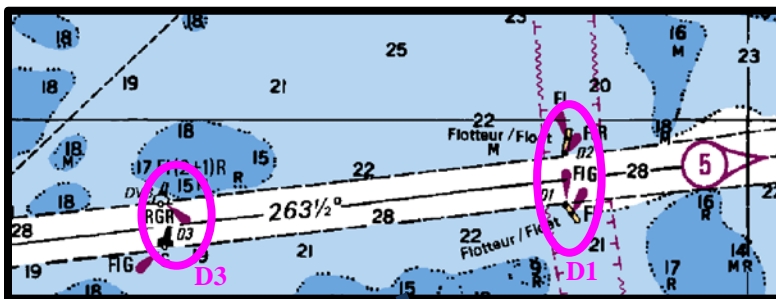
Upbound vessels (open water conditions)

- Upper Beauharnois lock to **D1**: 9 knots
- **D1** to D49 on Lake St. Francis: 12 knots

SCHEDULE II - TABLE OF SPEEDS¹
 (Section 28)

COLUMN I – FROM	COLUMN II – TO	MAXIMUM SPEED OVER THE BOTTOM (KNOTS)	
		COLUMN III	COLUMN IV
1. Upper Entrance South Shore Canal	Lake St. Louis Buoy A13	10.5	10.5
2. Lake St. Louis Buoy A13	Lower Entrance Lower Beauharnois Lock	12 (upb) 14 (dnb)	11 (upb) 13 (dnb)
3. Upper Entrance Upper Beauharnois Lock	Lake St. Francis Buoy D3	9 (upb) 10.5 (dnb)	9 (upb) 10.5 (dnb)
4. Lake St. Francis Buoy D3	Lake St. Francis Buoy D49	12(upd) 13.5(dnb)	12 13.5 (dnb)
5. Lake St. Francis Buoy D49	Snell Lock	8.5 (upb) 10.5 (dnb)	8 (upb) 10.5 (dnb)
6. Eisenhower Lock	Iroquois Lock	11.5	10.5
7. Iroquois Lock	McNair Island Light Buoy 137A	13	10.5
8. McNair Island Light Buoy 137A	Deer Island Lt. 186	11.5	10.5
9. Deer Island Lt. 186	Bartlett Point Lt. 227	8.5 (upb) 10.5 (dnb)	8 (upb) 10.5 (dnb)
10. Bartlett Point Lt. 227	Tibbetts Point	13	10.5
11. Junction of Canadian Middle Channel and Main Channel abreast of Ironsides Island	Open waters between Wolfe and Howe Islands through the Canadian Middle Channel	9.5	9.5
12. Port Robinson	Ramey's Bend through the Welland By-Pass	8	8
13. All other canals		6	6

Maximum speeds at which a ship may travel in the identified area in both normal and high water conditions are set out in this schedule. The Manager and the Corporation will, from time to time, designate the set of speed limits that is in effect.



Maisonneuve Region
 May 14, 2018

The St. Lawrence Seaway Management Corporation
 Corporation de Gestion de la Voie Maritime du Saint-Laurent

Région Maisonneuve
 151, rue de l'Écluse
 St-Lambert, Québec
 J4R 2V6

Tél : (450) 672-4115 Fax : (450) 672-8493

Niagara Region
 508 Glendale Avenue
 P.O. Box 370
 St-Catharines, Ontario
 L2R 6V8

Tél : (905) 641-1932 Fax : (905) 641-5721