



**The Great Lakes - St. Lawrence Seaway System**  
*Le réseau Grands Lacs - Voie maritime du Saint-Laurent*

2018 – Notice to Shipping #17

MAISONNEUVE REGION

MONTREAL / LAKE ONTARIO SECTION

**Tighter Speed Restrictions at Galop Island**

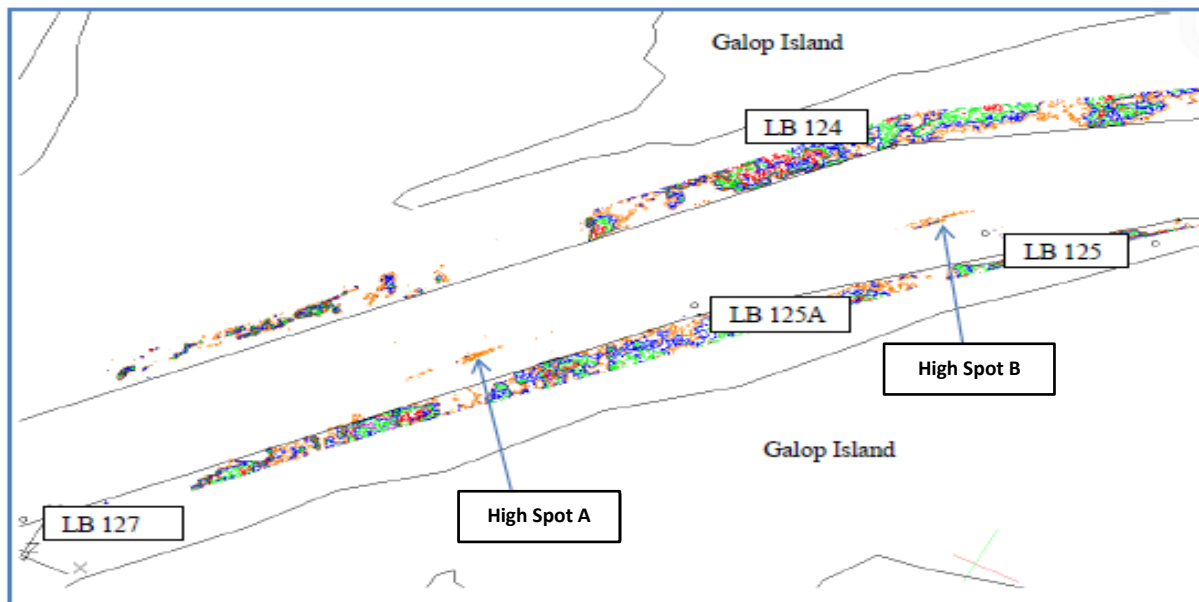
Mariners are advised that due to lower water levels in the Galop Island area and greater fluctuations in levels due to wind, the speed limit between LB 122 and LB 127 is reduced as follows:

- Vessels drafting 78.0dm or greater are limited to 7 knots upbound and 12 knots downbound.

For vessels with a draft of less than 78.0 dm, the speed limit of 13 knots remains in effect. Vessel speed in this area will be monitored closely.

Upbound and downbound vessels drafting 78.0 dm or greater are also advised to **avoid vessel meets and sailing over** the following identified high spots:

- High Spot A: 44° 45.6693'N 075° 24.8710'W
- High Spot B: 44° 45.9575'N 075° 24.4942'W



Conditions will be monitored closely and mariners will be advised of any changes.

Maisonneuve Region  
July 23, 2018

The St. Lawrence Seaway Management Corporation  
Corporation de Gestion de la Voie Maritime du Saint-Laurent

Région Maisonneuve  
151, rue de l'Écluse  
St-Lambert, Québec  
J4R 2V6

Tél : (450) 672-4115 Fax : (450) 672-8493

Niagara Region  
508 Glendale Avenue  
P.O. Box 370  
St-Catharines, Ontario  
L2R 6V8

Tél : (905) 641-1932 Fax : (905) 641-5721