



The Great Lakes - St. Lawrence Seaway System
Le réseau Grands Lacs - Voie maritime du Saint-Laurent

2018 – Notice to Shipping #22

MAISONNEUVE REGION

MONTREAL / LAKE ONTARIO SECTION

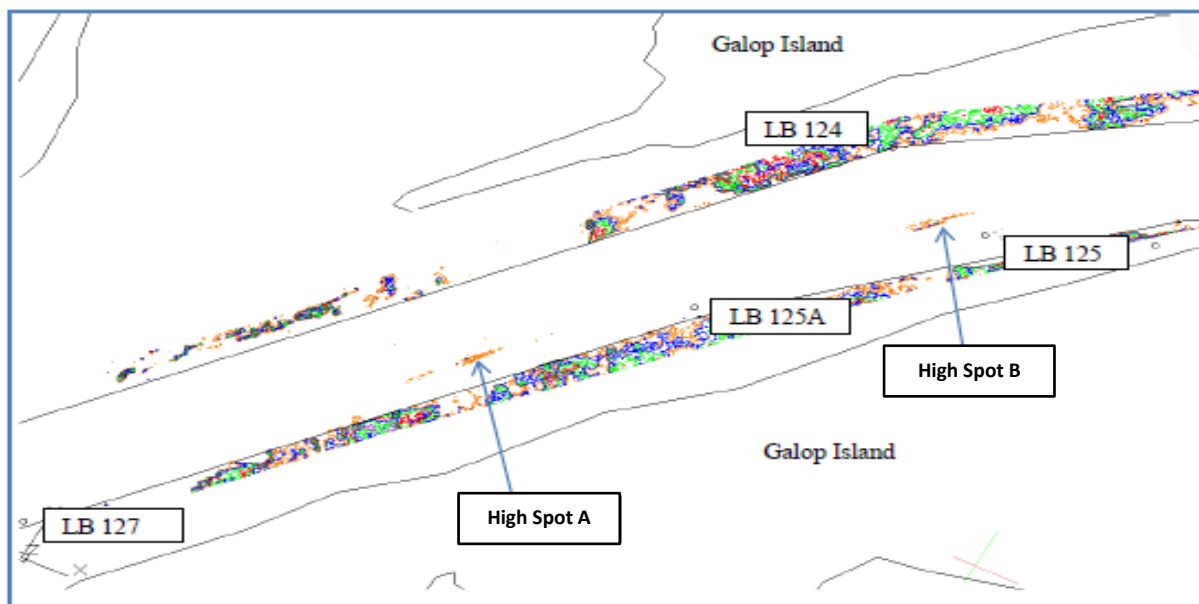
Tighter Speed Restrictions at Galop Island – Revised

Mariners are advised that water levels in the Galop Island area continue to decline and vary significantly with wind conditions. For this reason, **the speed limits between buoys LB 122 and LB 127** are reduced as follows:

- **Vessels drafting greater than 70.0 dm** are limited to 7 knots upbound and 11 knots downbound.
- **Vessels drafting 70.0 dm or less** are limited to 10.5 knots upbound and 13 knots downbound.

All vessels are advised to **avoid vessel meets and sailing over** the following identified high spots:

- High Spot A: $44^{\circ} 45.6693'N$ $075^{\circ} 24.8710'W$
- High Spot B: $44^{\circ} 45.9575'N$ $075^{\circ} 24.4942'W$



Conditions will be monitored closely and mariners will be advised of any changes.

Maisonneuve Region

September 10, 2018

The St. Lawrence Seaway Management Corporation
Corporation de Gestion de la Voie Maritime du Saint-Laurent

Région Maisonneuve
151, rue de l'Écluse
St-Lambert, Québec
J4R 2V6

Tél : (450) 672-4115 Fax : (450) 672-8493

Niagara Region
508 Glendale Avenue
P.O. Box 370
St-Catharines, Ontario
L2R 6V8

Tél : (905) 641-1932 Fax : (905) 641-5721