



The Great Lakes - St. Lawrence Seaway System
Le réseau Grands Lacs - Voie maritime du Saint-Laurent

2019 – Notice to Shipping #22

MAISONNEUVE REGION

MONTREAL / LAKE ONTARIO SECTION

Restrictions at High Spots Near Galop Island (Cancelled 2019/09/13)

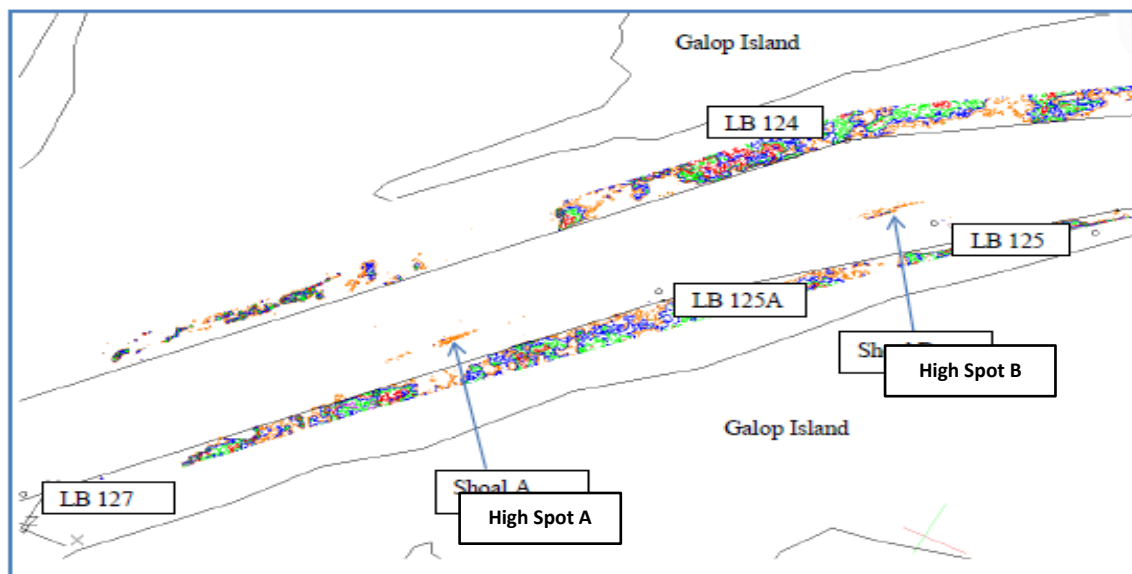
As water levels are starting to decline, upbound and downbound ships drafting greater than 78.0 dm are advised to **avoid ship meets and sailing over** the following two high spots:

High Spot A: 44⁰ 45.6693'N 075⁰ 24.8710'W

High Spot B: 44⁰ 45.9575'N 075⁰ 24.4942'W

In addition, maximum speed for upbound ships drafting greater than 78.0 dm is 8 knots between LB 122 and LB 127.

Ship speed in this area will be monitored closely.



Maisonneuve Region

July 15, 2019

The St. Lawrence Seaway Management Corporation
Corporation de Gestion de la Voie Maritime du Saint-Laurent

Région Maisonneuve
151, rue de l'Écluse
St-Lambert, Québec
J4R 2V6

Tél : (450) 672-4115 Fax : (450) 672-8493

Niagara Region
508 Glendale Avenue
P.O. Box 370
St-Catharines, Ontario
L2R 6V8

Tél : (905) 641-1932 Fax : (905) 641-5721