



The Great Lakes - St. Lawrence Seaway System *Le réseau Grands Lacs - Voie maritime du Saint-Laurent*

2015 – Notice to Shipping N° 27

MAISONNEUVE REGION

MONTREAL / LAKE ONTARIO SECTION

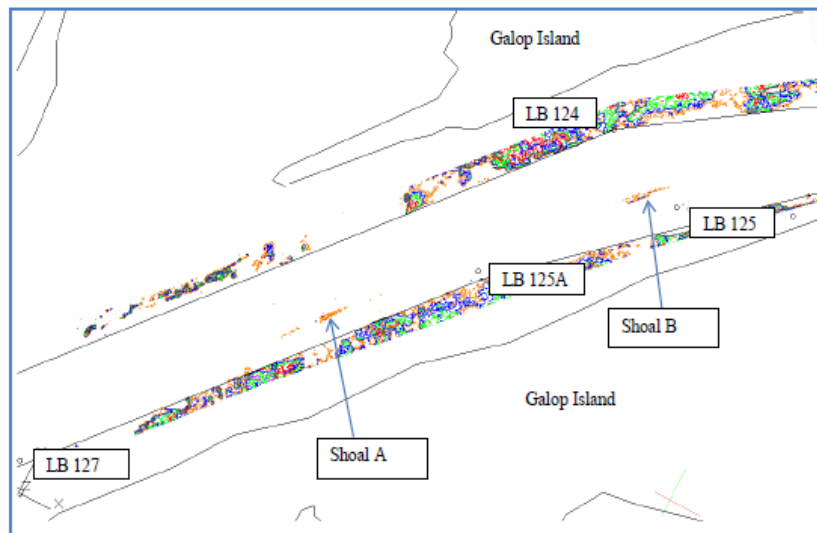
Shoaling at Galop Island – Revised

Mariners are advised that water levels in the Galop Island area continue to decline and vary significantly with wind conditions. For this reason, **the speed limits between buoys LB 122 and LB 127** are reduced as follows:

- **Upbound vessels drafting greater than 70.0 dm** are limited to 7 knots.
- **Upbound vessels drafting 70.0 dm or less** are limited to 10.5 knots.
- **All downbound vessels** are limited to 12.0 knots.

All vessels are advised to **avoid vessel meets and sailing over** the following identified shoals:

- Shoal A: 44° 45.6693'N 075° 24.8710'W
- Shoal B: 44° 45.9575'N 075° 24.4942'W



Conditions will continue to be monitored closely and mariners will be advised of any changes.

Maisonneuve Region
September 30, 2015

The St. Lawrence Seaway Management Corporation
Corporation de Gestion de la Voie Maritime du Saint-Laurent

Région Maisonneuve
151, rue de l'Écluse
St-Lambert, Québec
J4R 2V6

Tél : (450) 672-4115 Fax : (450) 672-8493

Niagara Region
508 Glendale Avenue
P.O. Box 370
St-Catharines, Ontario
L2R 6V8

Tél : (905) 641-1932 Fax : (905) 641-5721