



The Great Lakes - St. Lawrence Seaway System *Le réseau Grands Lacs - Voie maritime du Saint-Laurent*

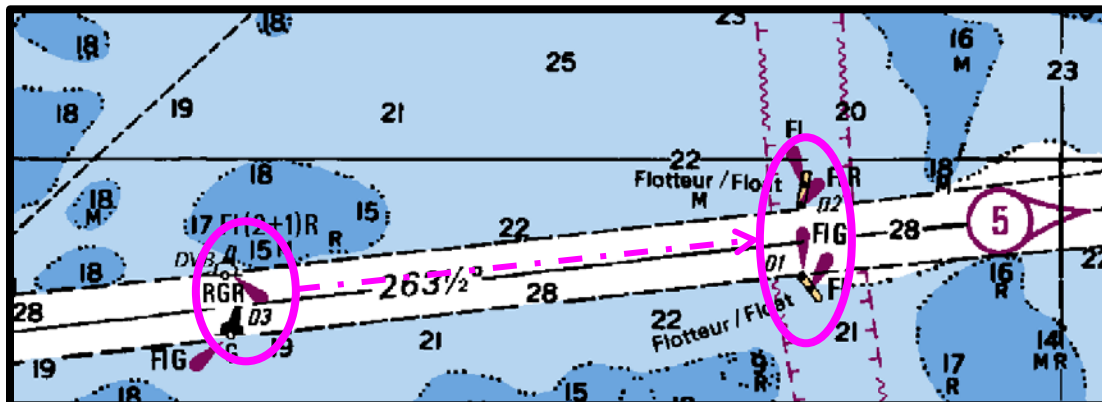
2017 – Notice to Shipping N° 7
MAISONNEUVE REGION
MONTREAL / LAKE ONTARIO SECTION

Speed Limit Modification on Lake St. Francis

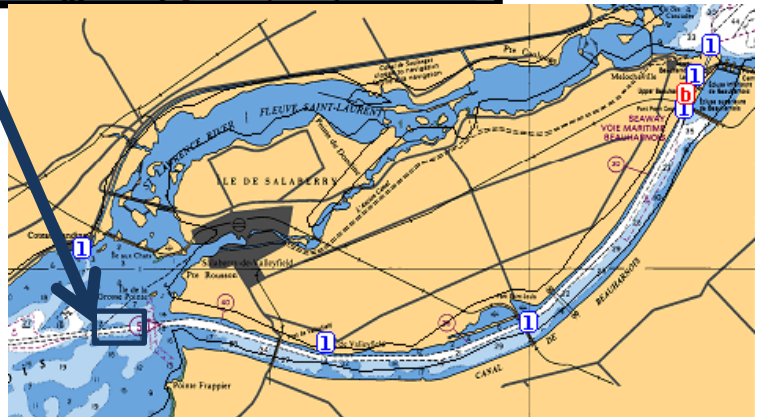
Mariners are advised that the location of speed change for upbound vessels only has been moved from D3 to D1. The speed limits are therefore as follows:

- From upper Beauharnois lock to D1: upbounds limited to 9 knots
- From D1 to D49 on Lake St. Francis: upbounds limited to 12 knots
- No changes for downbound vessels

This modification is for open water conditions only and will be subject to review at the end of the navigation season.



Maisonneuve Region
March 10, 2017



The St. Lawrence Seaway Management Corporation
Corporation de Gestion de la Voie Maritime du Saint-Laurent

Région Maisonneuve
151, rue de l'Écluse
St-Lambert, Québec
J4R 2V6

Tél : (450) 672-4115 Fax : (450) 672-8493

Niagara Region
508 Glendale Avenue
P.O. Box 370
St-Catharines, Ontario
L2R 6V8

Tél : (905) 641-1932 Fax : (905) 641-5721