



The Great Lakes - St. Lawrence Seaway System
Le réseau Grands Lacs - Voie maritime du Saint-Laurent

2018 – Notice to Shipping #9

MAISONNEUVE REGION

MONTREAL / LAKE ONTARIO SECTION

High Spots at Galop Island - Revised (Cancelled 2018/05/02)

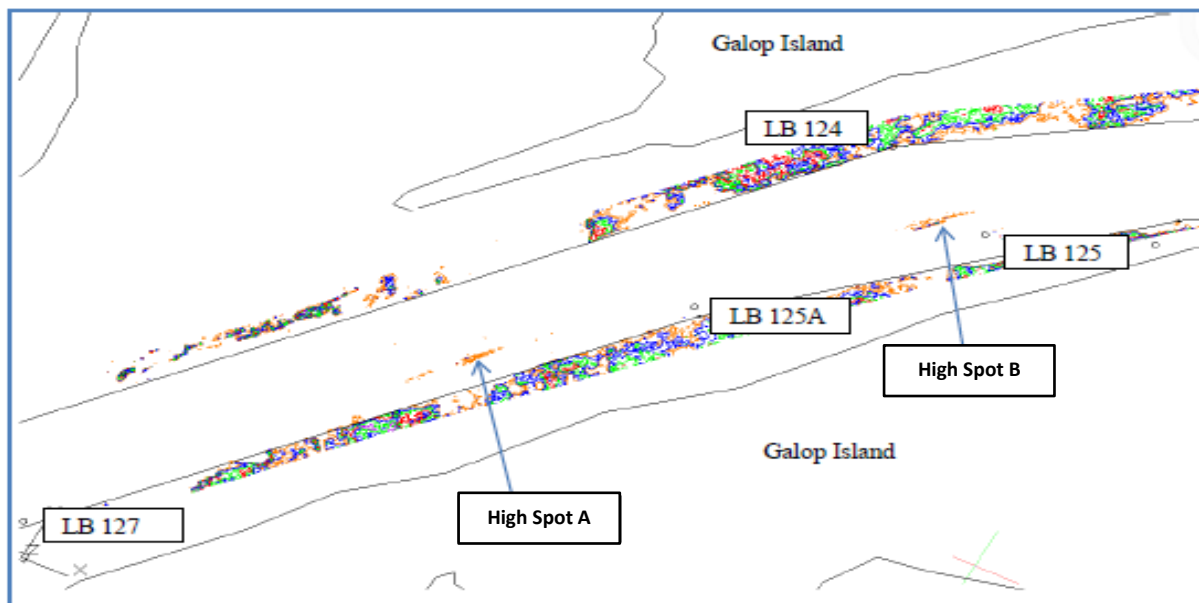
Mariners are advised that due to existing water levels in the Galop Island area, the speed limit between LB 122 and LB 127 is reduced as follows:

- Vessels drafting 78.0dm or greater are limited to 7 knots upbound and 12 knots downbound.

For vessels with a draft of less than 78.0 dm, the speed limit of 13 knots remains in effect. Vessel speed in this area will be monitored closely.

Upbound and downbound vessels drafting 78.0 dm or greater are also advised to **avoid vessel meets and sailing over** the following identified high spots:

- High Spot A: 44⁰ 45.6693'N 075⁰ 24.8710'W
- High Spot B: 44⁰ 45.9575'N 075⁰ 24.4942'W



Conditions will be monitored closely and mariners will be advised of any changes.

Maisonneuve Region
March 29, 2018

The St. Lawrence Seaway Management Corporation
Corporation de Gestion de la Voie Maritime du Saint-Laurent

Région Maisonneuve
151, rue de l'Écluse
St-Lambert, Québec
J4R 2V6

Tél : (450) 672-4115 Fax : (450) 672-8493

Niagara Region
508 Glendale Avenue
P.O. Box 370
St-Catharines, Ontario
L2R 6V8

Tél : (905) 641-1932 Fax : (905) 641-5721