



**The Great Lakes - St. Lawrence Seaway System**  
*Le réseau Grands Lacs - Voie maritime du Saint-Laurent*

2018 – Notice to Shipping # 20

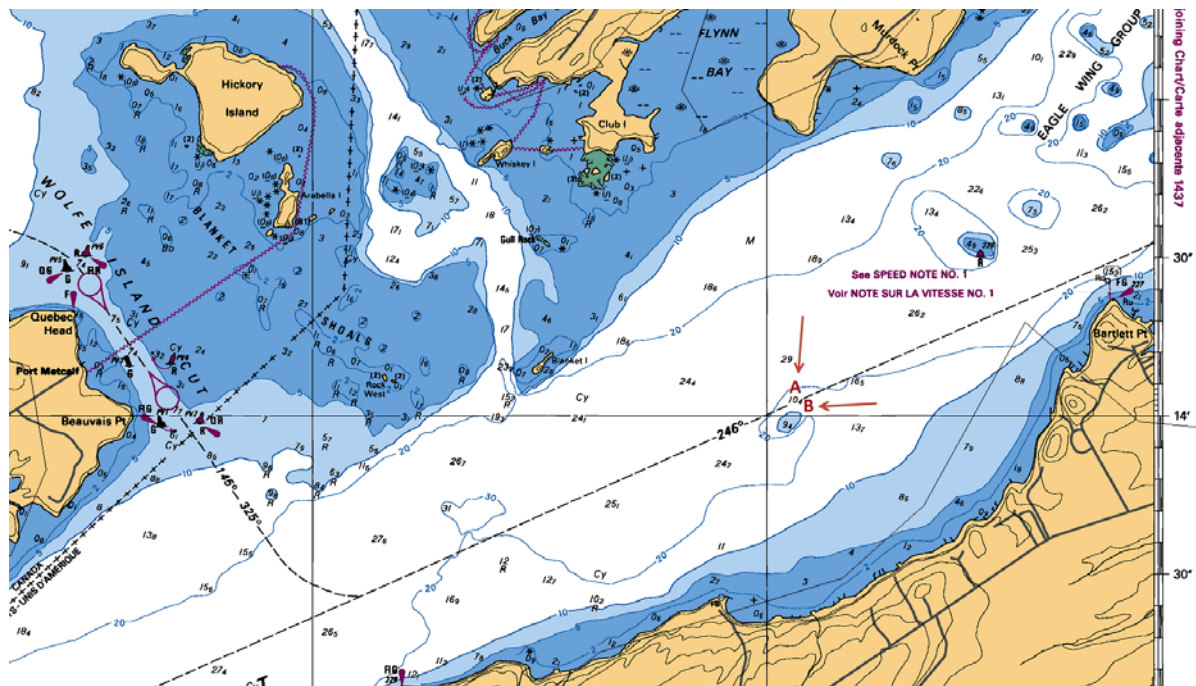
MAISONNEUVE REGION  
MONTREAL / LAKE ONTARIO SECTION

### High Spots Near Grindstone Island

Mariners are advised that **vessels drafting greater than 78.0 dm** are to **avoid vessel meets and sailing over** the following high spots identified during a recent bathymetric survey:

A - 44 14.0676N 076 07.8528W - DEPTH 8.7 METERS at chart datum

B - 44 14.0442N 076 07.8234W - DEPTH 8.5 METERS at chart datum



Maisonneuve Region  
August 23, 2018

The St. Lawrence Seaway Management Corporation  
Corporation de Gestion de la Voie Maritime du Saint-Laurent

Région Maisonneuve  
151, rue de l'Écluse  
St-Lambert, Québec  
J4R 2V6  
Tél : (450) 672-4115 Fax : (450) 672-8493

Niagara Region  
508 Glendale Avenue  
P.O. Box 370  
St-Catharines, Ontario  
L2R 6V8  
Tél : (905) 641-1932 Fax : (905) 641-5721