



The Great Lakes - St. Lawrence Seaway System
Le réseau Grands Lacs - Voie maritime du Saint-Laurent

2019 – Notice to Shipping #34

MAISONNEUVE REGION

MONTREAL / LAKE ONTARIO SECTION

Speed Restrictions at Galop Island - Revised (Cancelled 2019/10/01)

Mariners are advised that due to lower water levels in the Galop Island area and greater fluctuations in levels due to wind, the speed limit between LB 122 and LB 127 is reduced as follows:

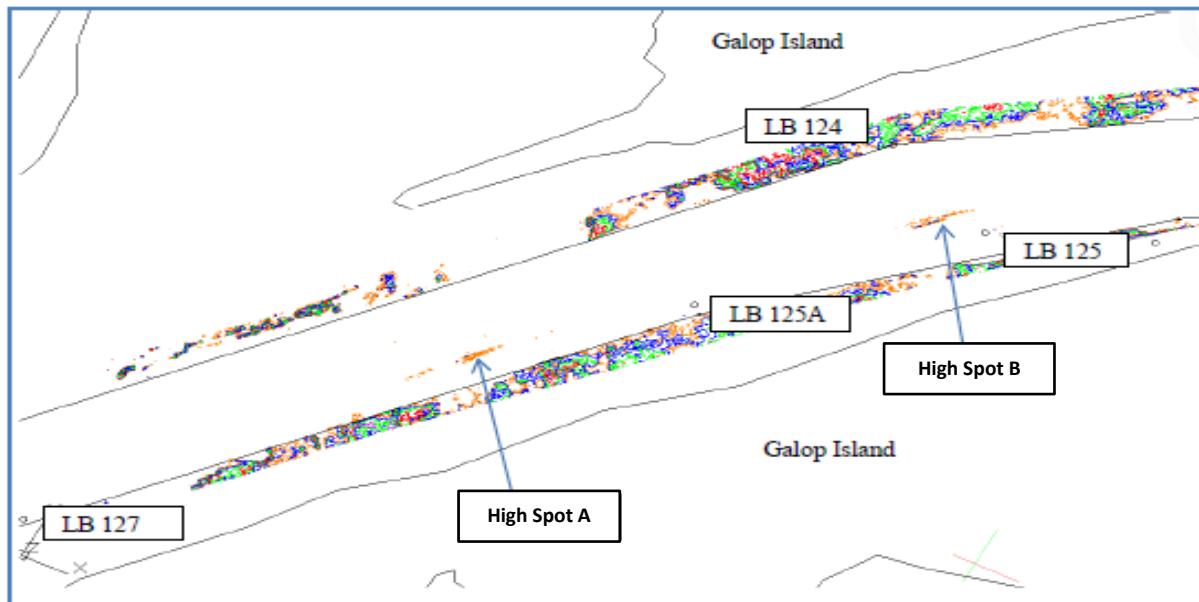
- Ships drafting 78.0dm or greater are limited to 7 knots upbound and 10.5 knots downbound (*Column IV of Schedule II – Table of Speeds in the Seaway Handbook Practices & Procedures*).

For ships with a draft of less than 78.0 dm, the *Column IV* limit of 10.5 knots remains in effect.

Vessel speed in this area will be monitored closely.

Upbound and downbound vessels drafting 78.0 dm or greater are also advised to **avoid vessel meets and sailing over** the following identified high spots:

- High Spot A: 44° 45.6693'N 075° 24.8710'W
- High Spot B: 44° 45.9575'N 075° 24.4942'W



Conditions will be monitored closely and mariners will be advised of any changes.

Maisonneuve Region
September 20, 2019

The St. Lawrence Seaway Management Corporation
Corporation de Gestion de la Voie Maritime du Saint-Laurent

Région Maisonneuve
151, rue de l'Écluse
St-Lambert, Québec
J4R 2V6

Tél : (450) 672-4115 Fax : (450) 672-8493

Niagara Region
508 Glendale Avenue
P.O. Box 370
St-Catharines, Ontario
L2R 6V8

Tél : (905) 641-1932 Fax : (905) 641-5721