



The Great Lakes - St. Lawrence Seaway System
Le réseau Grands Lacs - Voie maritime du Saint-Laurent

2020 – Notice to Shipping N° 30

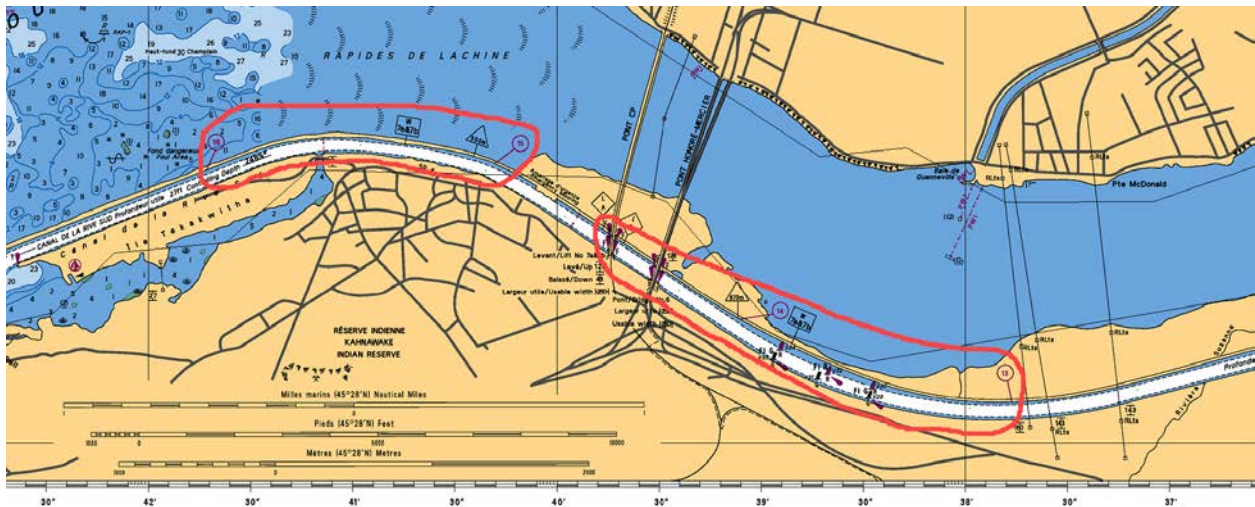
MAISONNEUVE REGION

MONTREAL / LAKE ONTARIO SECTION

Meets with Tugs and Barges in the South Shore Canal

Masters and Pilots of tugs and barges are strongly recommended to avoid meets in the following sections of the South Shore Canal:

- Between Mile 13 and the CPR Bridge (bridges 7A/7B); and
- Between Mile 15 and Mile 16 above the CPR Bridge (bridges 7A/7B).



Maisonneuve Region

July 14, 2020