



**The Great Lakes - St. Lawrence Seaway System**  
*Le réseau Grands Lacs - Voie maritime du Saint-Laurent*

---

Notice to Shipping NO. 5 – 2021

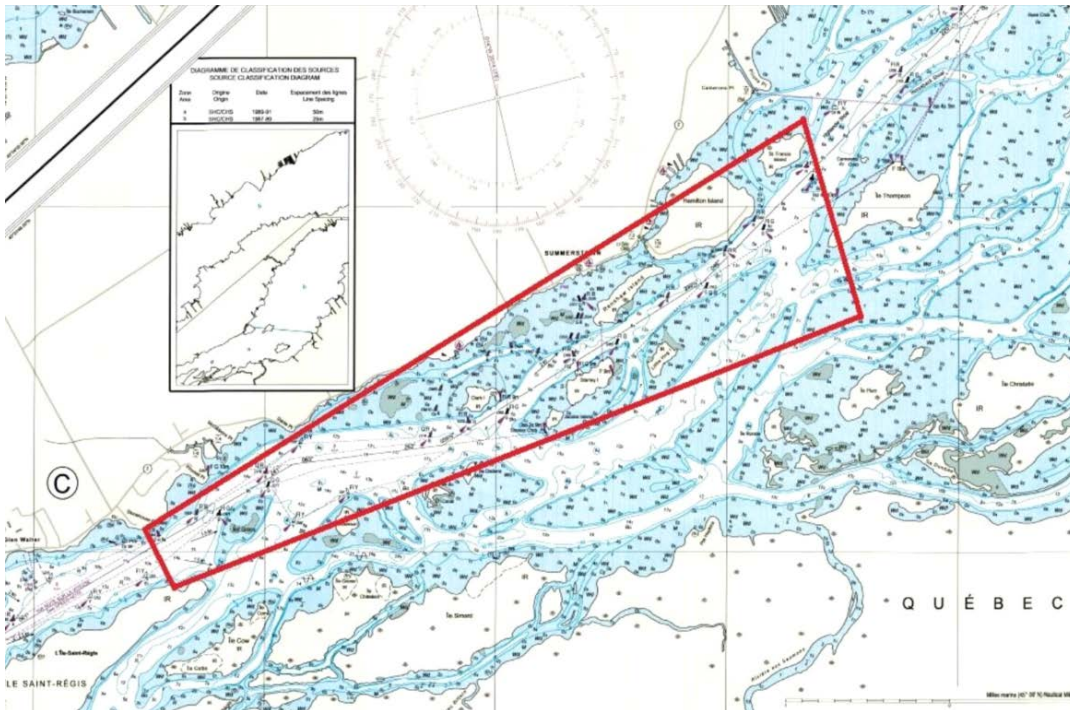
MAISONNEUVE REGION  
MONTREAL / LAKE ONTARIO SECTION

**VOLUNTARY SPEED REDUCTION PROGRAM IN SENSITIVE AREAS**

Mariners are asked to pay special attention to the wake created by their ship and voluntarily adjust their speed accordingly in order to minimize their impact on the shoreline properties in the following identified sensitive areas.

- Zone 1: West Lake St. Francis (Cameron's Point to St. Regis Island)
- Zone 2: Morrisburg (Broder Island to Mariatown)
- Zone 3: Brockville Narrows (Skelton Island to Fernbank)
- Zone 4: American Narrows (Alexandria Bay to Fineview)

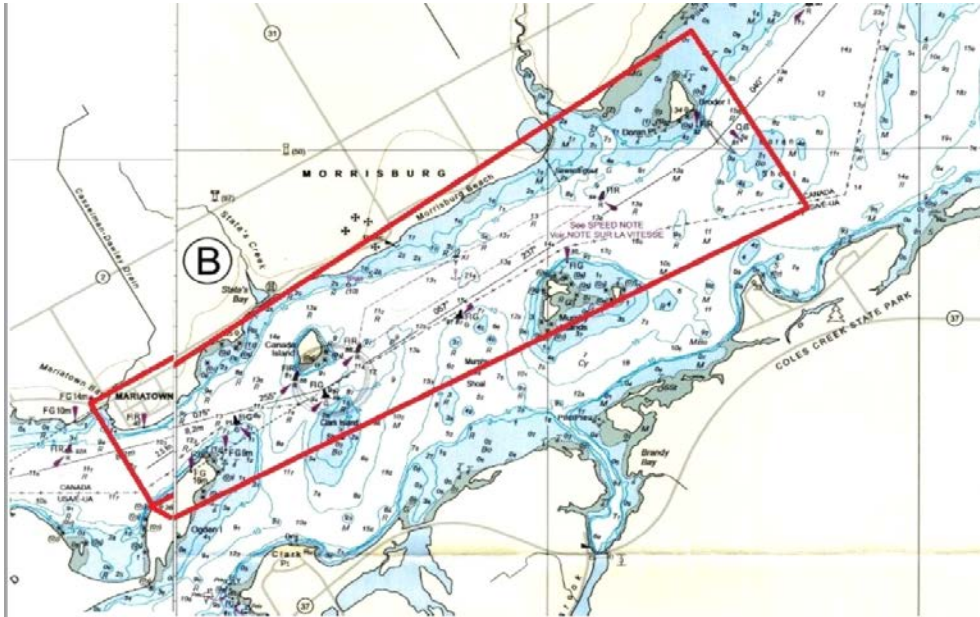
**Zone 1: West Lake St. Francis (Cameron's Point to St. Regis Island)**



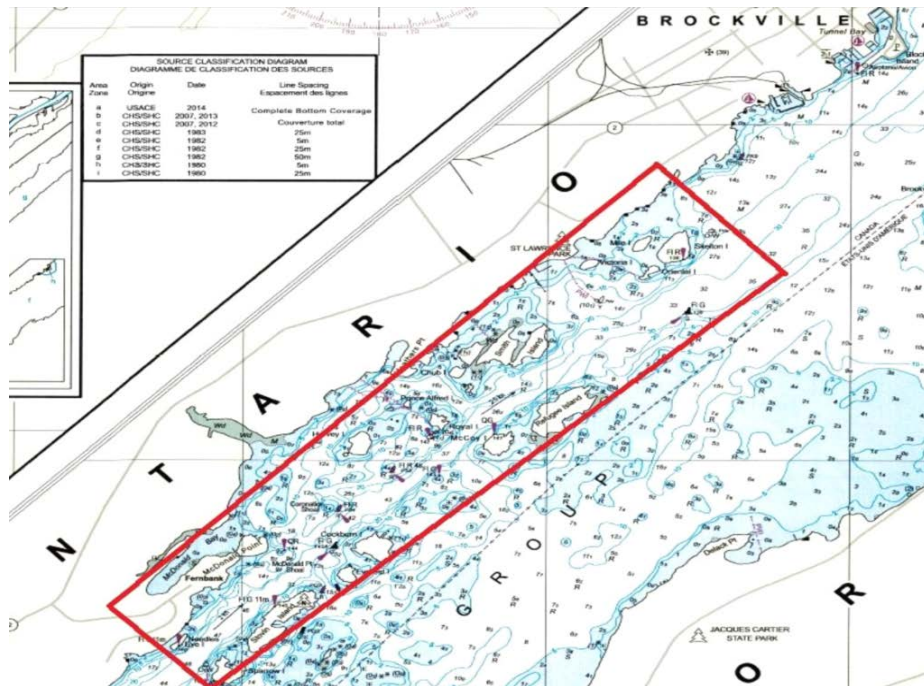


**The Great Lakes - St. Lawrence Seaway System**  
*Le réseau Grands Lacs - Voie maritime du Saint-Laurent*

**Zone 2: Morrisburg (Broder Island to Mariatown)**



**Zone 3: Brockville Narrows (Skelton Island to Fernbank)**

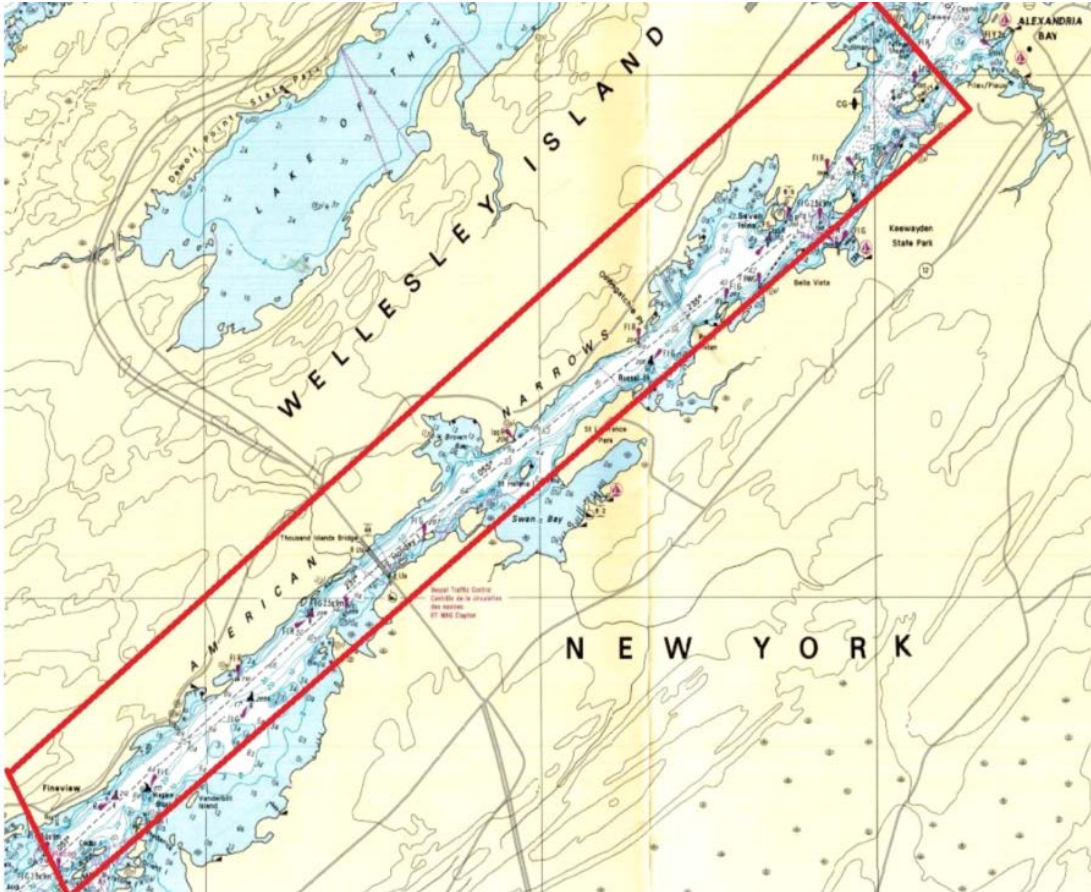






## The Great Lakes - St. Lawrence Seaway System *Le réseau Grands Lacs - Voie maritime du Saint-Laurent*

### Zone 4: American Narrows (Alexandria Bay to Fineview)



The voluntary speed reduction program will be reviewed and findings communicated near the end of the 2021 navigation season.

Thank you for your cooperation in this matter.

March 8, 2021