



2023 - NOTICE TO SHIPPING #20

MAISONNEUVE REGION MONTREAL / LAKE ONTARIO SECTION

Speed Restrictions - MLO Section – Revision #4 (Cancelled 2023/10/16)

Due to a reduction of water outflows, speed restrictions have been revised.

In addition to the speed limits outlined in the Seaway Practices & Procedures Schedule II - Table of Speeds, the following speed restrictions are also in effect in the MLO section:

LOCATION	RESTRICTION	
Galop Island, between LB122 & LB127	<u>Upbound ship:</u> <i>- Revised to 7 knots</i> for ships drafting greater than 78.0 dm	<u>Downbound ship:</u> <i>- Revised to 12 knots</i> for ships drafting greater than 78.0 dm
Sector IV, between buoys LB157 & LB162	<u>Upbound ship:</u> <i>- 8.5 knots</i> for ships drafting greater than 78.0dm	<u>Downbound ship:</u> N/A

*Ship speeds in the above areas will be monitored closely.

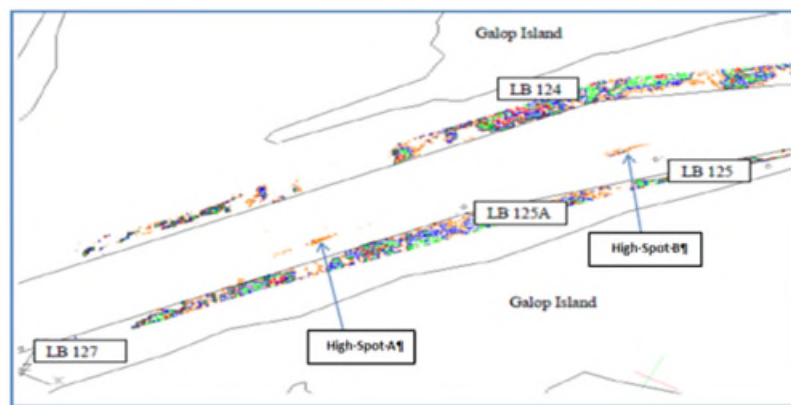


The Great Lakes - St. Lawrence Seaway System
Le réseau Grands Lacs - Voie maritime du Saint-Laurent

GALOP ISLAND - HIGH SPOTS

Ships drafting greater than 78.0 dm are advised to **avoid meets and sailing over** the Galop Island high spots located at the following coordinates:

- High Spot A: 44° 45.6693'N 075° 24.8710'W
- High Spot B: 44° 45.9575'N 075° 24.4942'W



SECTOR IV – HIGH SPOTS

Upbound ships drafting greater than 78.0 dm are to avoid ship meets and sailing over the high spots identified below:

- Above Cross Over Island Call In Point: 44° 29.5947'N 75° 46.5212'W
- Above North Colborne Island: 44° 15.4103'N 76° 4.226'W

Conditions will be monitored closely and Mariners will be advised of any changes.

September 29, 2023