



**NOTICE TO SHIPPING NO. 21 - 2024**

**MAISONNEUVE REGION  
MONTREAL / LAKE ONTARIO SECTION**

**SPEED RESTRICTIONS - MLO SECTION – Revision #3**

Due to decreasing water levels, speed restrictions have been revised.

In addition to the speed limits outlined in the Seaway Practices & Procedures Schedule II - Table of Speeds, the following speed restrictions are also in effect in the MLO section:

LOCATION	RESTRICTIONS	
	UPBOUND SHIP	DOWNBOUND SHIP
<b>Galop Island</b> , between LB122 & LB127	<ul style="list-style-type: none"><li>• <i>Revised to 7 knots</i> for ships drafting greater than <i>78.0 dm</i></li></ul>	<ul style="list-style-type: none"><li>• <i>Revised to 12 knots</i> for ships drafting greater than <i>78.0 dm</i></li></ul>
<b>Sector IV</b> , between buoys LB157 & LB162	<ul style="list-style-type: none"><li>• 8.5 knots for ships drafting greater than 78.0dm</li></ul>	N/A

\*Ship speeds in the above areas will be monitored closely.

***GALOP ISLAND - HIGH SPOTS***

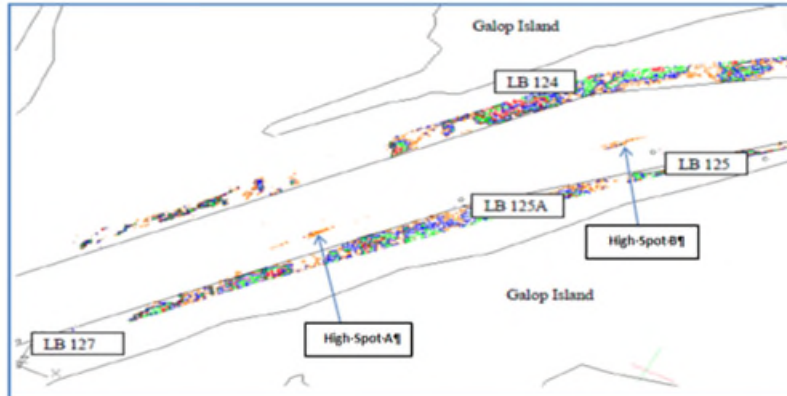
Ships drafting greater than 78.0 dm are advised to **avoid meets and sailing over** the Galop Island high spots located at the following coordinates:

- High Spot A: 44° 45.6693'N 075° 24.8710'W
- High Spot B: 44° 45.9575'N 075° 24.4942'W



## The Great Lakes - St. Lawrence Seaway System *Le réseau Grands Lacs - Voie maritime du Saint-Laurent*

---



### **SECTOR IV – HIGH SPOTS**

Upbound ships drafting greater than 78.0 dm are to avoid ship meets and sailing over the high spots identified below:

- Above Cross Over Island Call In Point: 44° 29.5947'N 75° 46.5212'W
- Above North Colborne Island: 44° 15.4103'N 76° 4.226'W

**Conditions will be monitored closely and Mariners will be advised of any changes.**

September 18, 2024