



NOTICE TO SHIPPING NO. 25 - 2024

MAISONNEUVE REGION
MONTREAL / LAKE ONTARIO SECTION

Speed Restrictions - MLO Section – Revision #4 (Revised 2024/10/15)

Due to decreasing water levels, speed restrictions have been revised.

In addition to the speed limits outlined in the Seaway Practices & Procedures Schedule II - Table of Speeds, the following speed restrictions are also in effect in the MLO section:

LOCATION	RESTRICTIONS	
	UPBOUND SHIP	DOWNBOUND SHIP
Galop Island, between LB122 & LB127	<ul style="list-style-type: none">• <u>Revised to 7 knots</u> for ships drafting greater than 70.0 dm• <u>Revised to 10.5 knots</u> for ships drafting 70.0 dm or less	<ul style="list-style-type: none">• <u>Revised to 10.5 knots</u> for ships drafting greater than 70.0 dm• <u>Revised to 13 knots</u> for ships drafting 70.0 dm or less
Sector IV, between buoys LB157 & LB162	<ul style="list-style-type: none">• 8.5 knots for ships drafting greater than 78.0dm	N/A

*Ship speeds in the above areas will be monitored closely.

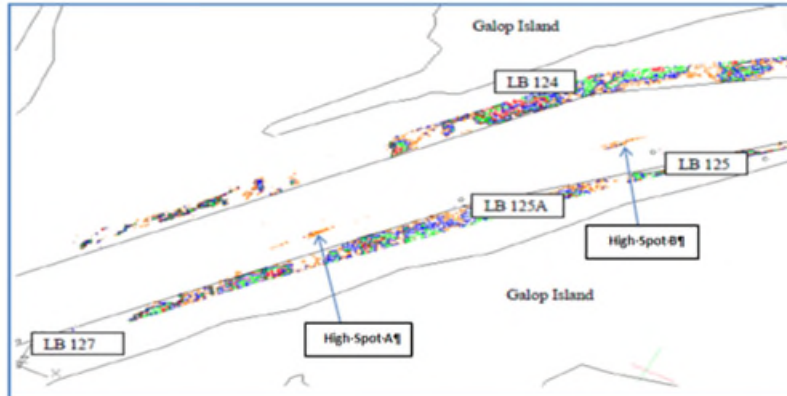
GALOP ISLAND - HIGH SPOTS

All ships are advised to **avoid meets and sailing over** the Galop Island high spots located at the following coordinates:

- High Spot A: 44° 45.6693'N 075° 24.8710'W
- High Spot B: 44° 45.9575'N 075° 24.4942'W



The Great Lakes - St. Lawrence Seaway System *Le réseau Grands Lacs - Voie maritime du Saint-Laurent*



SECTOR IV – HIGH SPOTS

Upbound ships drafting greater than 78.0 dm are to avoid ship meets and sailing over the high spots identified below:

- Above Cross Over Island Call In Point: 44° 29.5947'N 75° 46.5212'W
- Above North Colborne Island: 44° 15.4103'N 76° 4.226'W

Conditions will be monitored closely and Mariners will be advised of any changes.

October 15, 2024