



The Great Lakes - St. Lawrence Seaway System
Le réseau Grands Lacs - Voie maritime du Saint-Laurent

NOTICE TO SHIPPING NO. 29 - 2024

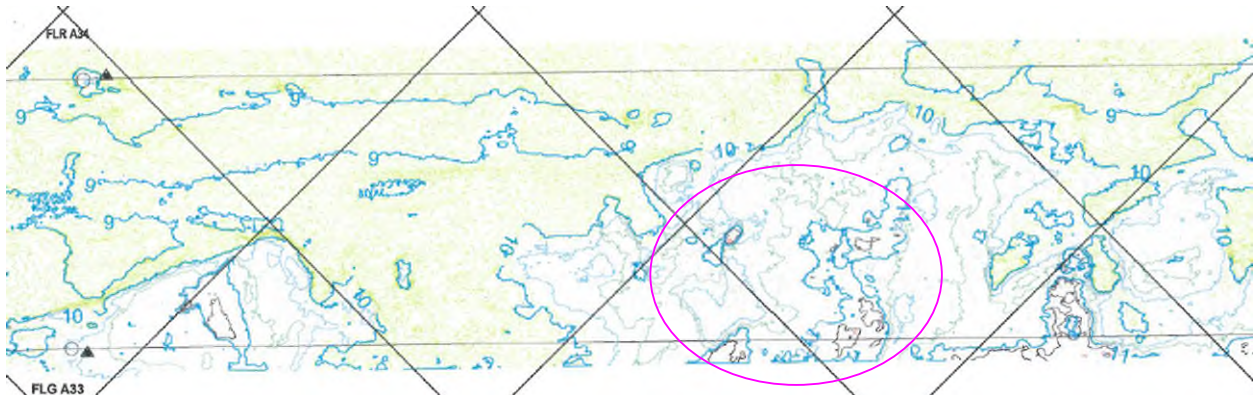
MAISONNEUVE REGION
MONTREAL / LAKE ONTARIO SECTION

LAKE ST. LOUIS HIGH SPOTS

In addition to the speed restrictions and high spots outlined in Notice to Shipping NO. 28 - 2024, we are also asking mariners to avoid sailing over and SOUTH of the following positions:

Two positions at 450 and 560 meters EAST of buoy A33 and at 80 meters NORTH of the SOUTH canal line.

- 45 degrees 22.34 minutes NORTH 73 degrees 49.38 minutes WEST
- 45 degrees 22.31 minutes NORTH 73 degrees 49.43 minutes WEST



The St. Lawrence Seaway Management Corporation
Corporation de Gestion de la Voie Maritime du Saint-Laurent
202 Pitt
Cornwall, Ontario
K6J 3P7
Tel: 613-932-5170

Great Lakes St. Lawrence Seaway Development Corporation
180 Andrews Street
Massena, New York
13662
Tel: 315-764-3200



The Great Lakes - St. Lawrence Seaway System *Le réseau Grands Lacs - Voie maritime du Saint-Laurent*

Also avoid sailing over and NORTH of the following positions:

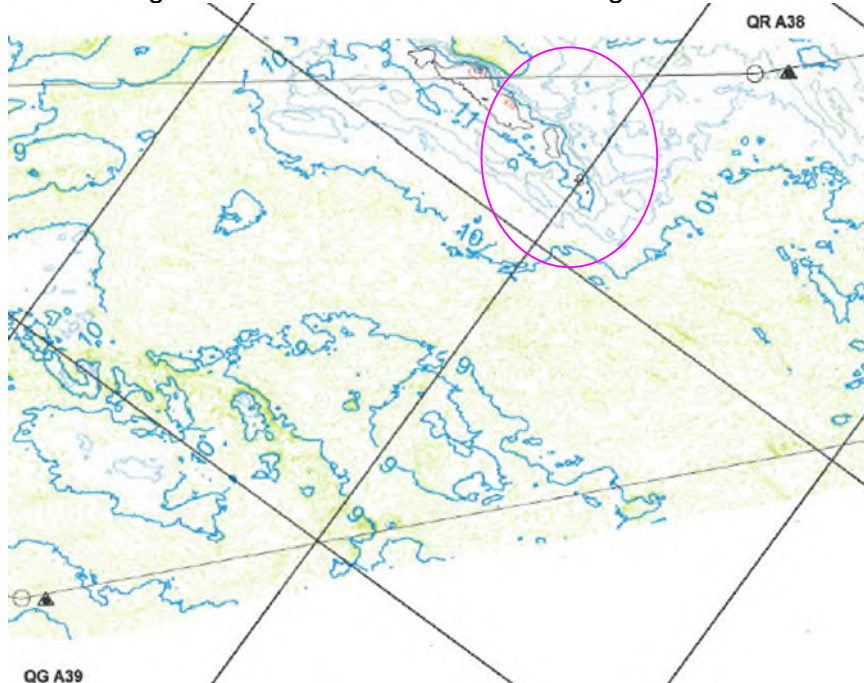
At 300 meters EAST of buoy A35 and 50 meters SOUTH of the NORTH canal line

- 45 degrees 21.96 minutes NORTH 73 degrees 49.97 minutes WEST



At 130 meters WEST of buoy A38 and 40 meters SOUTH of the NORTH canal line.

- 45 degrees 21.56 minutes NORTH 73 degrees 50.55 minutes WEST



Conditions will be monitored closely and Mariners will be advised of any changes.

October 29, 2024