



NOTICE TO SHIPPING NO. 32 - 2024

MAISONNEUVE REGION

MONTREAL / LAKE ONTARIO SECTION

SPEED RESTRICTIONS - MLO SECTION – Revision #7

Due to decreasing water levels on Lake St. Louis, a tighter speed restriction on the Lake St. Louis is in effect.

In addition to the speed limits outlined in the Seaway Practices & Procedures Schedule II - Table of Speeds, the following speed restrictions are also in effect in the MLO section:

LOCATION	RESTRICTIONS	
	UPBOUND SHIP	DOWNBOUND SHIP
Lake St. Louis, between Buoy A13 & Lower Entrance of Lower Beauharnois Lock	<ul style="list-style-type: none">Revised to 11 knots for all ships, as per column IV of the speed table	<ul style="list-style-type: none">Revised to 13 knots for all ships, as per column IV of the speed table
Lake St. Louis, between buoys A30 & A40	<ul style="list-style-type: none">Revised to 8 knots for ships drafting 76.0 dm or greaterShips drafting 76.0 dm or greater are to avoid ship meets	<ul style="list-style-type: none">Revised to 8 knots for ships drafting 76.0 dm or greaterShips drafting 76.0 dm or greater are to avoid ship meets
Galop Island, between buoys LB122 & LB127	<ul style="list-style-type: none">7 knots for ships drafting greater than 70.0 dm10.5 knots for ships drafting 70.0 dm or less	<ul style="list-style-type: none">10.5 knots for ships drafting greater than 70.0 dm13 knots for ships drafting 70.0 dm or less



The Great Lakes - St. Lawrence Seaway System
Le réseau Grands Lacs - Voie maritime du Saint-Laurent

Sector IV , between buoys LB157 & LB162	<ul style="list-style-type: none">8.5 knots for ships drafting greater than 78.0 dm	N/A
--	---	-----

*Ship speeds in the above areas will be monitored closely.

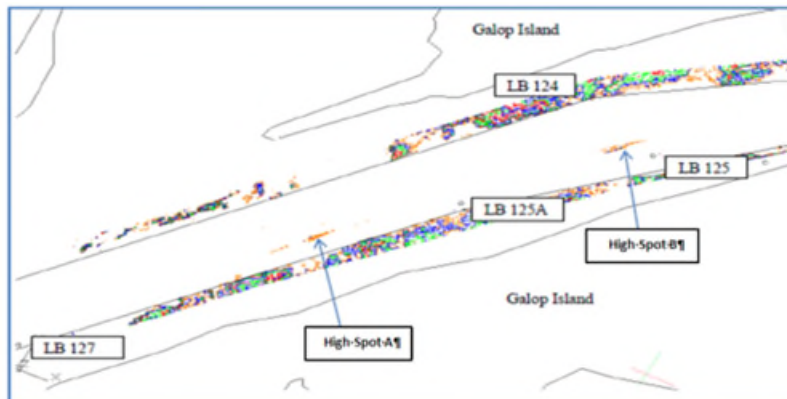
LAKE ST. LOUIS - HIGH SPOTS

Refer to Notice to Shipping #29 of year 2024.

GALOP ISLAND - HIGH SPOTS

All ships are advised to **avoid meets and sailing over** the Galop Island high spots located at the following coordinates:

- High Spot A: 44° 45.6693'N 075° 24.8710'W
- High Spot B: 44° 45.9575'N 075° 24.4942'W



SECTOR IV – HIGH SPOTS

Upbound ships drafting greater than 78.0 dm are to avoid ship meets and sailing over the high spots identified below:

- Above Cross Over Island Call In Point: 44° 29.5947'N 75° 46.5212'W
- Above North Colborne Island: 44° 15.4103'N 76° 4.226'W

Conditions will be monitored closely and Mariners will be advised of any changes.

December 6, 2024