



The Great Lakes - St. Lawrence Seaway System
Le réseau Grands Lacs - Voie maritime du Saint-Laurent

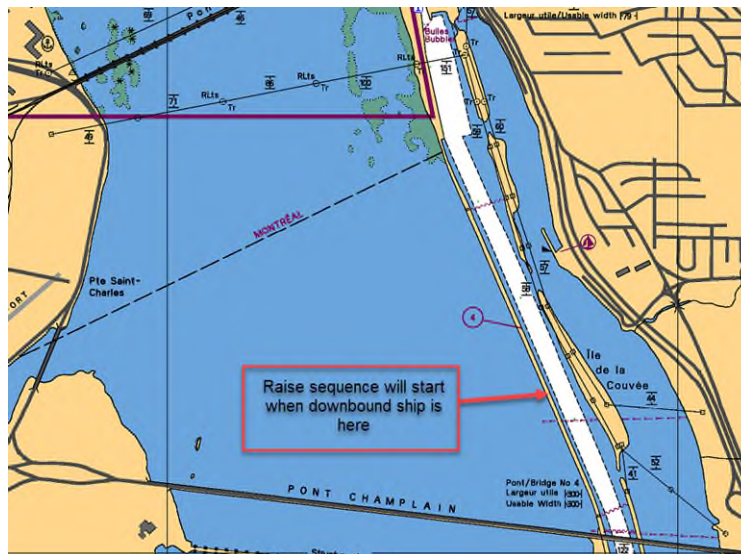
Notice to Shipping NO. 6 - 2025

MAISONNEUVE REGION
MONTREAL / LAKE ONTARIO SECTION

Bridge Raising Sequence for Downbound Ships at St. Lambert Lock

In an effort to improve bridge availability for our communities following positive outcomes monitored last year for users of the bike path, the improved bridge raising sequence for Bridge 3 at St. Lambert lock will be ongoing in 2025.

As such, Mariners are advised that Bridge 3 will start to rise once the downbound ship is 1370 meters from the end of the upper wall of St. Lambert Lock (at the middle of Ile-de-la-Couvée). The procedure applies only during the Bridge 3 bike path's operating hours, 06:00 - 23:00 daily from April 5 to December 7, 2025.



Mariners are invited to maintain their usual approach speed.

April 10, 2025

The St. Lawrence Seaway Management Corporation
Corporation de Gestion de la Voie Maritime du Saint-Laurent

Région Maisonneuve
151, rue de l'Écluse
St-Lambert, Québec
J4R 2V6

Tél : (450) 672-4115 Fax : (450) 672-8493

Niagara Region
508 Glendale Avenue
P.O. Box 370
St-Catharines, Ontario
L2R 6V8

Tél : (905) 641-1932 Fax : (905) 641-5721