



The Great Lakes - St. Lawrence Seaway System
Le réseau Grands Lacs - Voie maritime du Saint-Laurent

2026 - NOTICE TO SHIPPING #8

MAISONNEUVE REGION
MONTREAL / LAKE ONTARIO SECTION

Request to Reduce Speed in Sensitive Areas

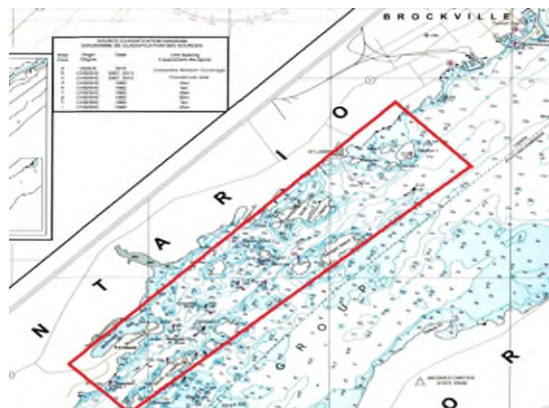
Due to higher water levels on the Upper St. Lawrence River, Mariners are reminded to voluntarily reduce their speed in order to minimize their wake and subsequent impact on the shoreline properties in the following sensitive areas.

- Morrisburg (Broder Island to Mariatown)
- Brockville Narrows (Skelton Island to Fernbank)
- American Narrows (Alexandria Bay to Fineview)

Morrisburg (Broder Island to Mariatown)



Brockville Narrows (Skelton Island to Fernbank)



The St. Lawrence Seaway Management Corporation
Corporation de Gestion de la Voie Maritime du Saint-Laurent

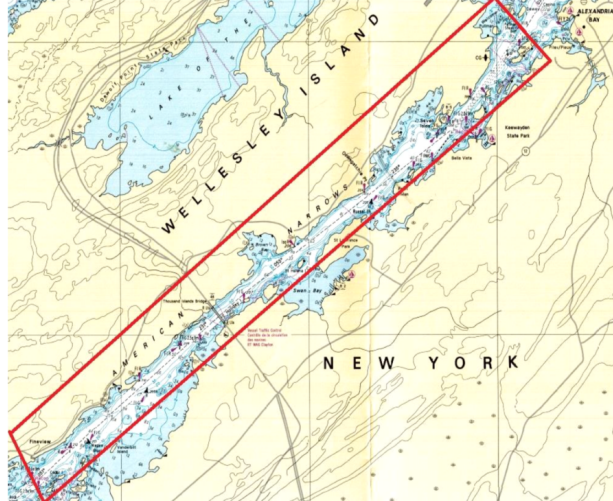
Région Maisonneuve
151, rue de l'Écluse
St-Lambert, Québec J4R 2V6
Tél : (450) 672-4115

Niagara Region
508 Glendale Avenue
St. Catharines, Ontario L2R 6V8
Tel : (905) 641-1932



The Great Lakes - St. Lawrence Seaway System
Le réseau Grands Lacs - Voie maritime du Saint-Laurent

American Narrows (Alexandria Bay to Fineview)



Thank you for your cooperation in this matter.

April 17, 2026